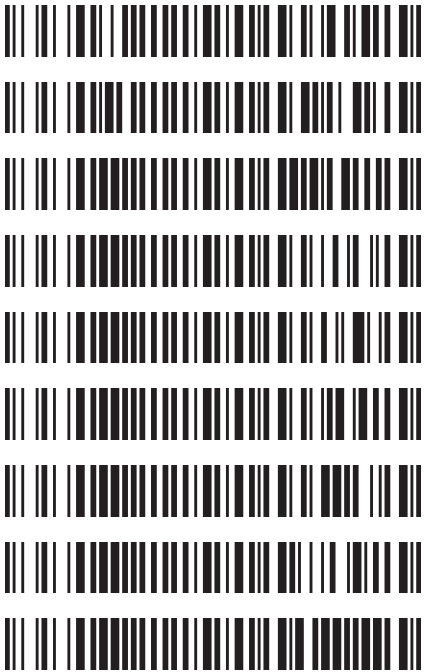


**Worklist: 2750**

<u>LAB_CASE</u>	<u>ITEM</u>	<u>TASK_ID</u>	<u>DESCRIPTION</u>
C2018-2009	2	129654	AM 3 Urine Carboxy-THC
M2018-5040	4	129655	AM 3 Urine Carboxy-THC
P2018-2827	1	129656	AM 3 Urine Carboxy-THC
P2018-2897	1	129657	AM 3 Urine Carboxy-THC
P2018-2898	1	129658	AM 3 Urine Carboxy-THC
P2018-2899	1	129659	AM 3 Urine Carboxy-THC
P2018-2900	1	129660	AM 3 Urine Carboxy-THC
P2018-2916	2	129661	AM 3 Urine Carboxy-THC
P2018-2984	1	129662	AM 3 Urine Carboxy-THC



g

Area Percent Report

Data Path : I:\Instrument Data\Pocatello\Major Mass Spec\CDS\2018\am 3 worklist 2750\  
 Data File : THC-PC1.D  
 Acq On : 23 Oct 2018 13:17  
 Operator : ISP\datastor  
 Sample : Spiked Positive c-THC Control  
 Misc : c-THC lot # 0497429 in Negative Lot # POC062718; Worklist 2750  
 ALS Vial : 2 Sample Multiplier: 1

Integration Parameters: events.e  
 Integrator: ChemStation

Method : C:\gcms\1\methods\TOX.M  
 Title :

Signal : EIC Ion 371.00 (370.70 to 371.70): THC-PC1.D\data.ms

peak #	R.T. min	first scan	max scan	last scan	PK TY	peak height	corr. area	corr. % max.	% of total
1	6.654	91	129	150	PV	4218	80940	100.00%	93.661%
2	7.098	268	283	304	VV	149	4619	5.71%	5.345%
3	7.309	333	356	359	PBA	40	859	1.06%	0.994%

Sum of corrected areas: 86418  
 Signal : EIC Ion 473.00 (472.70 to 473.70): THC-PC1.D\data.ms

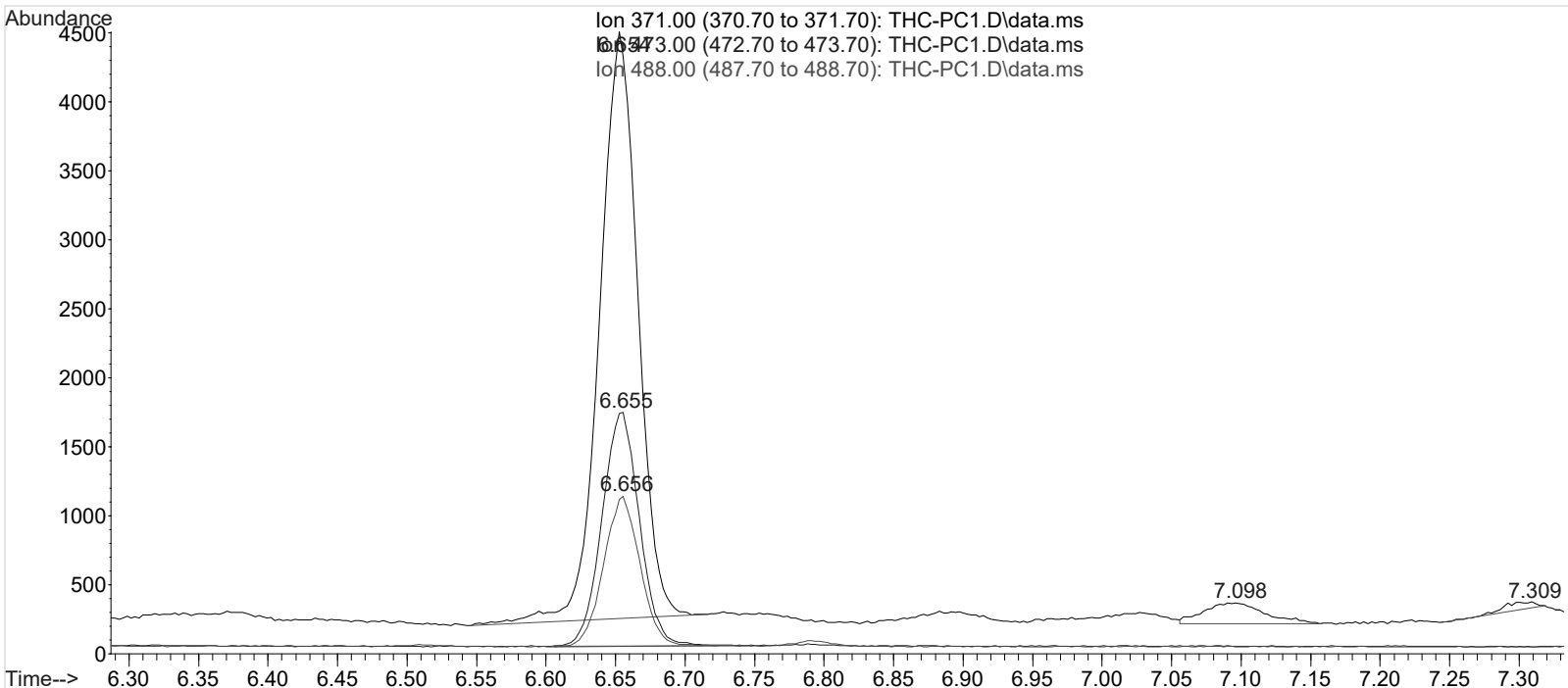
peak #	R.T. min	first scan	max scan	last scan	PK TY	peak height	corr. area	corr. % max.	% of total
1	6.655	111	129	160	BV	1698	31744	100.00%	100.000%

Sum of corrected areas: 31744  
 Signal : EIC Ion 488.00 (487.70 to 488.70): THC-PC1.D\data.ms

peak #	R.T. min	first scan	max scan	last scan	PK TY	peak height	corr. area	corr. % max.	% of total
1	6.656	112	129	153	BB	1084	19855	100.00%	100.000%

Sum of corrected areas: 19855

TOX.M Thu Oct 25 12:04:55 2018



Data Path : I:\Instrument Data\Pocatello\Major Mass Spec\CDS\2018\am 3 worklist 2750\  
 Data File : THC-PC2.D  
 Acq On : 24 Oct 2018 14:22  
 Operator : ISP\datastor  
 Sample : Spiked Positive c-THC Control  
 Misc : c-THC lot # 0497429 in Negative Lot # POC062718; Worklist 2750  
 ALS Vial : 2 Sample Multiplier: 1

Integration Parameters: events.e  
 Integrator: ChemStation

Method : C:\gcms\1\methods\TOX.M  
 Title :

Signal : EIC Ion 371.00 (370.70 to 371.70): THC-PC2.D\data.ms

peak #	R.T. min	first scan	max scan	last scan	PK TY	peak height	corr. area	corr. % max.	% of total
1	6.641	77	124	144	BV	3958	76003	100.00%	90.869%
2	7.086	265	279	300	VV	186	5162	6.79%	6.172%
3	7.293	331	350	359	PBA	101	2475	3.26%	2.959%

Sum of corrected areas: 83639  
 Signal : EIC Ion 473.00 (472.70 to 473.70): THC-PC2.D\data.ms

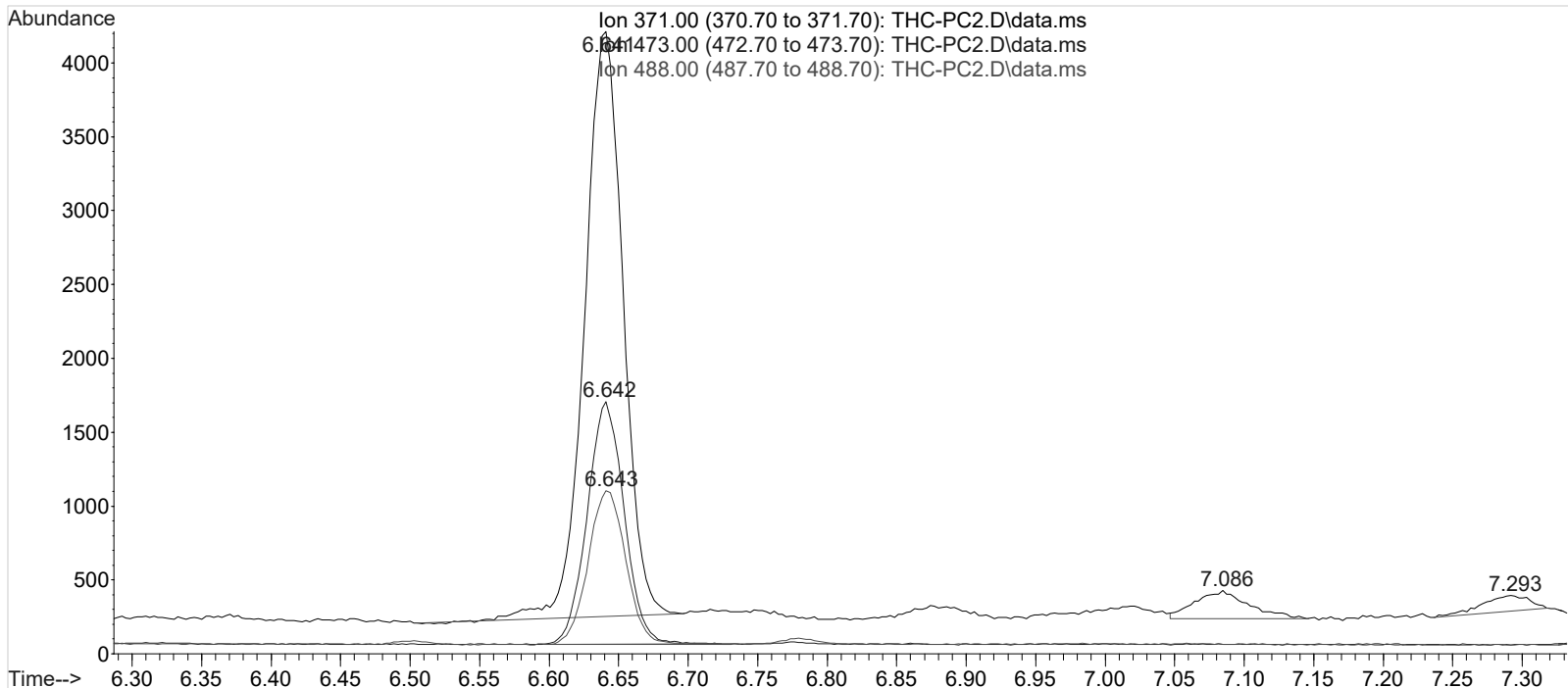
peak #	R.T. min	first scan	max scan	last scan	PK TY	peak height	corr. area	corr. % max.	% of total
1	6.642	109	124	153	BB	1635	30469	100.00%	100.000%

Sum of corrected areas: 30469  
 Signal : EIC Ion 488.00 (487.70 to 488.70): THC-PC2.D\data.ms

peak #	R.T. min	first scan	max scan	last scan	PK TY	peak height	corr. area	corr. % max.	% of total
1	6.643	110	125	155	BB	1039	19690	100.00%	100.000%

Sum of corrected areas: 19690

TOX.M Thu Oct 25 12:07:45 2018



Data Path : I:\Instrument Data\Pocatello\Major Mass Spec\CDS\2018\am 3 worklist 2750\  
Data File : THC-NC.D  
Acq On : 23 Oct 2018 13:05  
Operator : ISP\datastor  
Sample : Negative Control  
Misc : Lot # POC062718; AM #3 Worklist 2750  
ALS Vial : 1 Sample Multiplier: 1

Integration Parameters: events.e  
Integrator: ChemStation

Method : C:\gcms\1\methods\TOX.M  
Title :

Signal : EIC Ion 371.00 (370.70 to 371.70): THC-NC.D\data.ms

peak #	R.T. min	first scan	max scan	last scan	PK TY	peak height	corr. area	corr. % max.	% of total
1	7.094	268	281	295	VV	92	1943	100.00%	100.000%

Sum of corrected areas: 1943

Signal : EIC Ion 473.00 (472.70 to 473.70): THC-NC.D\data.ms

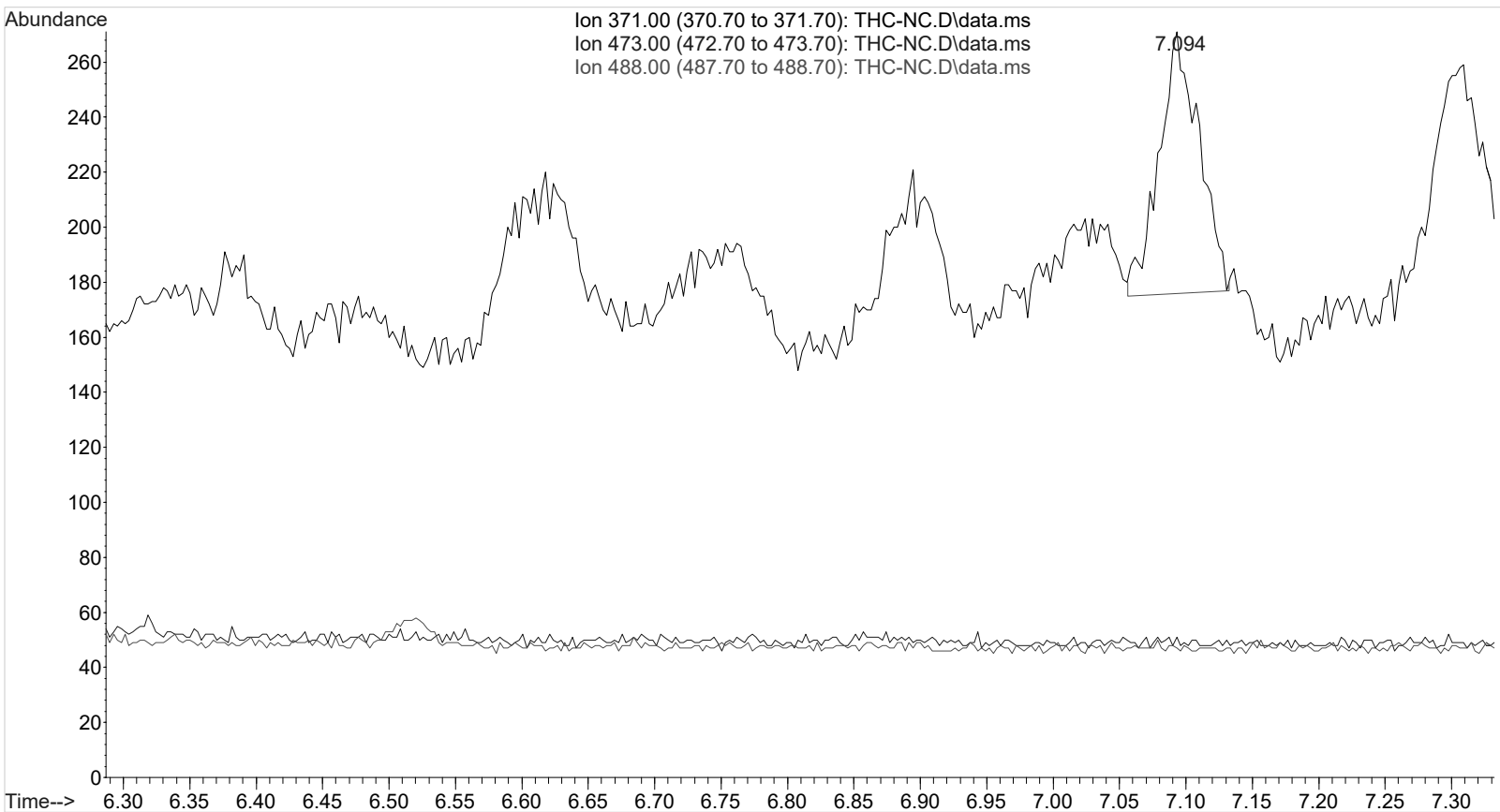
peak #	R.T. min	first scan	max scan	last scan	PK TY	peak height	corr. area	corr. % max.	% of total
No peaks were detected using the method integration parameters!									

No peaks were detected using the method integration parameters!  
Signal : EIC Ion 488.00 (487.70 to 488.70): THC-NC.D\data.ms

peak #	R.T. min	first scan	max scan	last scan	PK TY	peak height	corr. area	corr. % max.	% of total
No peaks were detected using the method integration parameters!									

No peaks were detected using the method integration parameters!

TOX.M Thu Oct 25 12:59:02 2018



Area Percent Report

CS

Data Path : I:\Instrument Data\Pocatello\Major Mass Spec\CDS\2018\am 3 worklist 2750\  
Data File : THC-C3.D  
Acq On : 23 Oct 2018 13:39  
Operator : ISP\datastor  
Sample : Biorad C3 Control  
Misc : C3 Lot # 68460; Worklist 2750  
ALS Vial : 3 Sample Multiplier: 1

Integration Parameters: events.e  
Integrator: ChemStation

Method : C:\gcms\1\methods\TOX.M  
Title :

Signal : EIC Ion 371.00 (370.70 to 371.70): THC-C3.D\data.ms

peak #	R.T. min	first scan	max scan	last scan	PK TY	peak height	corr. area	corr. % max.	% of total
1	6.646	86	126	145	BB 2	737	14318	100.00%	100.000%

Sum of corrected areas: 14318

Signal : EIC Ion 473.00 (472.70 to 473.70): THC-C3.D\data.ms

peak #	R.T. min	first scan	max scan	last scan	PK TY	peak height	corr. area	corr. % max.	% of total
1	6.648	113	126	148	BB 2	286	5276	100.00%	100.000%

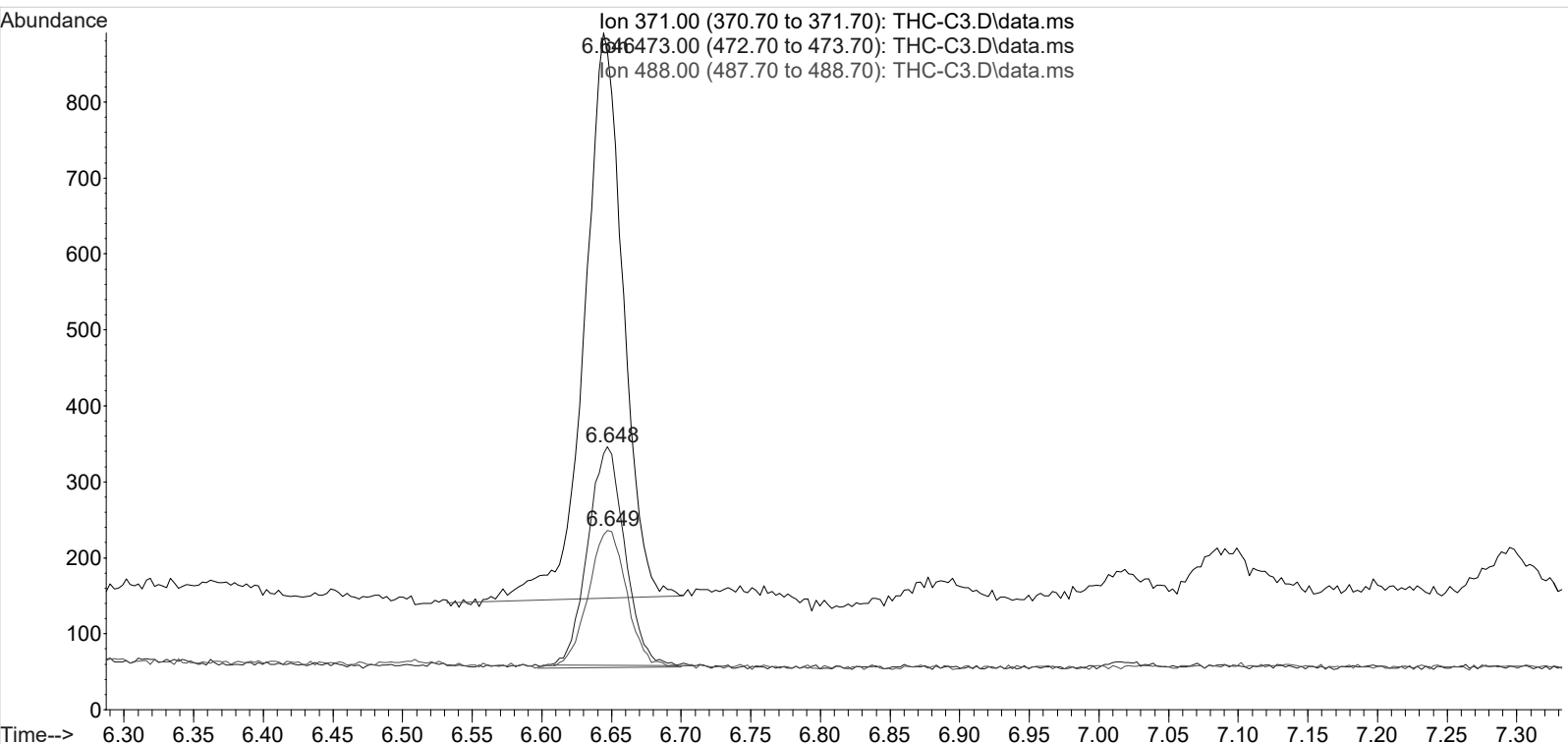
Sum of corrected areas: 5276

Signal : EIC Ion 488.00 (487.70 to 488.70): THC-C3.D\data.ms

peak #	R.T. min	first scan	max scan	last scan	PK TY	peak height	corr. area	corr. % max.	% of total
1	6.649	109	127	144	BB 2	181	3484	100.00%	100.000%

Sum of corrected areas: 3484

TOX.M Thu Oct 25 12:08:52 2018



**Run Date:** 10/23/2018

**Worklist #:** 2750

**Laboratory Case #:** BioRad C3 Lot: 68460

**Case Calculations:**

EIC Ion 371 Corr. Area: 14318

EIC Ion 473 Corr. Area: 5276

EIC Ion 488 Corr. Area: 3484

473:371 Ratio: **0.368**

488:371 Ratio: **0.243**

**Quality Control Calculations:**

	1st Control	2nd Control
EIC Ion 371 Corr. Area:	80940	76003
EIC Ion 473 Corr. Area:	31744	30469
EIC Ion 488 Corr. Area:	19855	19690
Ratio of 473:371:	0.392	0.401
		Average: 0.397
Ratio of 488:371:	0.245	0.259
		Average: 0.252

**Acceptable Retention Time Range:** 6.554 to 6.741

**Approximate Minimum Corrected Area of 371 Ion:** 15201

**Acceptable 473:371 Ratio Range:** 0.317 to 0.476

**Acceptable 488:371 Ratio Range:** 0.202 to 0.303